

**THE BRITISH CHESS MAGAZINE**  
**LONDON ENGLAND**  
**DECEMBER 1893**

(pages 555 - 557)



BY JAMES RAYNER.

*B.C.M. Solution Tourney.*—Once more the problems are victors in our Solution Tourney. Although F. R. Gittins and "Beta" (Rev. J. C. Blissard) tie with 141 points, each solver has been upset, the former by a two-move "cook" and the latter by the discovery of two solutions which do not work. The third place is leisurely taken by J. Foulds, of Bradford, a new competitor in our tourneys. We congratulate the winners upon their success in a very scrambling competition. The scores are as follows :—

|                        | Old | Score, | 972 | 973 | 974 | 975 | 976 | 977 | 980 | 981 | 982 | 983  | Total |     |
|------------------------|-----|--------|-----|-----|-----|-----|-----|-----|-----|-----|-----|------|-------|-----|
| "Beta" ... ..          | 91  | ...    | 3   | 2   | 1   | 3   | 2   | 3   | 2   | 2   | 4   | 30-2 | ...   | 141 |
| F. R. Gittins ... ..   | 91  | ...    | 3   | 2   | 1   | 3   | 2   | 3   | 2   | 2   | 2   | 30   | ...   | 141 |
| J. Foulds ... ..       | 91  | ...    | 3   | 2   | 1   | 3   | 2   | 3   | 2   | 2   | 2   | 24   | ...   | 135 |
| "De Novo" ... ..       | 84  | ...    | 3   | 2   | 1   | 3   | 2   | 3   | 2   | 2   | 2   | 24   | ...   | 128 |
| "Harold" ... ..        | 82  | ...    | 3   | 2   | 1   | 3   | 2   | 3   | 2   | 2   | 2   | 30-2 | ...   | 130 |
| J. T. Knight ... ..    | 85  | ...    | 3   | 2   | 1   | 3   | 2   | 3   | 2   | 2   | 4   | 18   | ...   | 125 |
| "Alpha" ... ..         | 79  | ...    | 3   | 2   | 1   | 3   | 2   | 3   | 2   | 2   | 2   | 18   | ...   | 117 |
| "Chat" ... ..          | 82  | ...    | 3   | 2   | 1   | 3   | 2   | 3   | 2   | -1  | 2   | 18   | ...   | 117 |
| Chas. Johnstone ... .. | 78  | ...    | 3   | 2   | 1   | 3   | 2   | 3   | 2   | -1  | 2   | 21   | ...   | 116 |
| C. S. Earle ... ..     | 85  | ...    | 3   | 2   | 1   | 3   | 2   | 3   | 2   | 2   | 2   | 3    | ...   | 108 |
| E. Titterton ... ..    | 83  | ...    | -1  | 2   | 1   | 3   | 2   | -1  | 2   | 2   | 2   | 3    | ...   | 98  |
| E. A. Crowley ... ..   | 76  | ...    | ... | 2   | 1   | 3   | 2   | 3   | -1  | 2   | 2   | 3    | ...   | 93  |
| "Templemore" ... ..    | 71  | ...    | ... | 2   | 1   | 3   | 2   | -1  | 2   | 2   | 2   | 3    | ...   | 87  |

Correct Solutions of Nos. 956, 958, 964, 966, 968, 969, 970, and 971 from H. S. Brandreth; of Nos. 980, 981, and 982 from John M'Robert; of Nos. 973, 974, 980, 982 (2) from "Bellum"; and of Nos. 973, 976, 977, 982, and 983 from Master Geo. A. Thomas.

*All-in Solution Tourney.*—The prize for the solver at the top is taken this month by "Harold" (Rev. Alex. Bayne). This is the second time the Scotch solver has reached the highest point and we warmly congratulate him upon his skill and perseverance. The position of the other solvers is as follows :—

|                        | Old Score, | 972 | 973 | 974 | 975 | 976 | 977 | 978 | 979 | 980 | 981 | 982 | 983  | Total. |
|------------------------|------------|-----|-----|-----|-----|-----|-----|-----|-----|-----|-----|-----|------|--------|
| "Harold" ... ..        | 316        | 3   | 2   | 1   | 3   | 2   | 3   | 4   | 5   | 2   | 2   | 2   | 30-2 | 373    |
| A. C. White ... ..     | 307        | 3   | 2   | 1   | 3   | 2   | 3   | 4   | 5   | 2   | 2   | 2   | 24   | 360    |
| E. W. Brook ... ..     | 284        | 3   | 2   | 1   | 3   | 2   | 3   | 4   | 5   | 2   | 2   | 2   | 3    | 316    |
| E. Titterton ... ..    | 272        | 3   | 2   | 1   | 3   | 2   | 3   | 4   | 5   | 2   | 2   | 2   | 3    | 287    |
| "De Novo" ... ..       | 228        | 3   | 2   | 1   | 3   | 2   | 3   | 4   | 5   | 2   | 2   | 2   | 24   | 281    |
| "Chat" ... ..          | 229        | 3   | 2   | 1   | 3   | 2   | 3   | 4   | 5   | 2   | 2   | 2   | 18   | 268    |
| Chas. Johnstone ... .. | 223        | 3   | 2   | 1   | 3   | 2   | 3   | 4   | 5   | 2   | 2   | 2   | 21   | 265    |
| "Alpha" ... ..         | 188        | 3   | 2   | 1   | 3   | 2   | 3   | 4   | 5   | 2   | 2   | 2   | 18   | 235    |
| "Templemore" ... ..    | 205        | 3   | 2   | 1   | 3   | 2   | 3   | 4   | 5   | 2   | 2   | 2   | 3    | 221    |

M 5

|                           |     |    |   |   |    |   |   |   |   |    |   |    |      |     |
|---------------------------|-----|----|---|---|----|---|---|---|---|----|---|----|------|-----|
| "East Marden" ... ..      | 129 | 3  | 2 | 1 | -1 | 2 | 3 | 4 | 5 | -1 | 2 | 2  | 30-2 | 170 |
| J. T. Knight ... ..       | 128 | 3  | 2 | 1 | 3  | 2 | 3 | 4 | 5 | 2  | 2 | 4  | 18   | 172 |
| C. S. Earle ... ..        | 102 | 3  | 2 | 1 | 3  | 2 | 3 | 4 | 5 | 2  | 2 | 2  | 3    | 134 |
| E. A. Crowley ... ..      | 80  | 3  | 2 | 1 | 3  | 2 | 3 | 4 | 5 | 2  | 2 | 2  | 3    | 97  |
| "Beta" ... ..             | 28  | 3  | 2 | 1 | 3  | 2 | 3 | 4 | 5 | 2  | 2 | 4  | 30-2 | 87  |
| F. R. Gittins ... ..      | —   | 3  | 2 | 1 | 3  | 2 | 3 | 4 | 5 | 2  | 2 | 2  | 30   | 59  |
| W. Prendergast ... ..     | —   | 3  | 2 | 1 | 3  | 2 | 3 | 4 | 5 | 2  | 2 | 2  | 3    | 27  |
| Rev. F. O'D. Hoare ... .. | —   | -1 | 2 | 1 | -1 | 2 | 3 | 4 | 5 | 2  | 2 | -1 | 3    | 9   |

Additional solvers of Nos. 956—971 :—

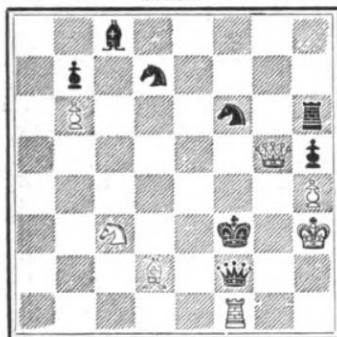
|                          |     |   |   |   |   |   |   |   |   |   |   |   |   |   |   |   |   |     |
|--------------------------|-----|---|---|---|---|---|---|---|---|---|---|---|---|---|---|---|---|-----|
| A. C. White, New York    | 268 | 2 | 2 | 2 | 2 | 4 | 3 | 6 | 0 | 2 | 2 | 3 | 3 | 2 | 2 | 2 | 2 | 307 |
| E. W. Brook ... ..       | 251 | 2 | 2 | 2 | 2 | 4 | 3 | 0 | 0 | 2 | 2 | 3 | 3 | 2 | 2 | 2 | 2 | 284 |
| C. Stuart Prince, Moscow | 105 | 2 | 2 | 2 | 2 | 0 | 0 | 0 | 0 | 2 | 2 | 0 | 0 | 2 | 2 | 2 | 2 | 125 |

Previous winners : J. S. Russell, Rev. A. M. Deane, T. H. Billington, Alex. Bayne, F. R. Gittins, H. H. Davis, T. H. Billington, Rev. A. M. Deane, A. H. C. Hamilton, W. Clarkson, Rev. J. C. Blissard, and F. R. Gittins.

## SOLUTIONS OF PROBLEMS.

No. 986.—By J. T. KNIGHT,  
WORCESTER.

BLACK.

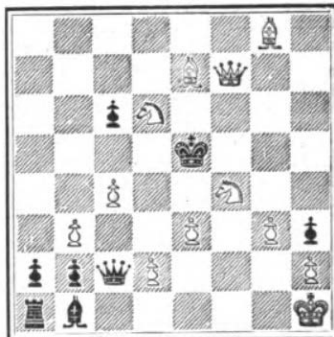


WHITE.

White compels Black to mate in two moves.

No. 987.—By E. A. CROWLEY,  
LONDON.

BLACK.



WHITE.

White compels Black to mate in two moves.